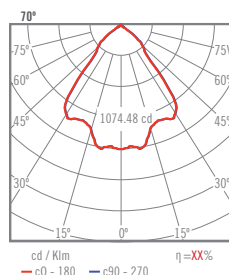
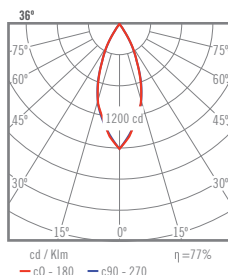
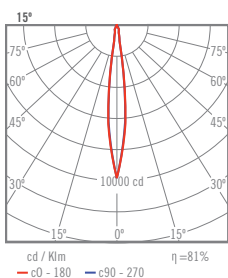
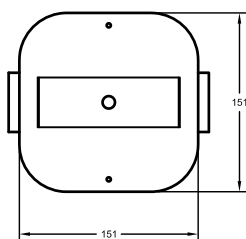
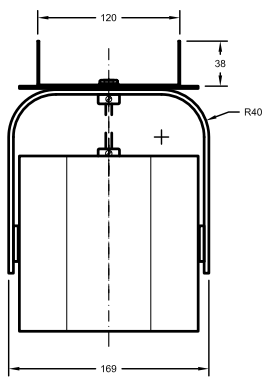
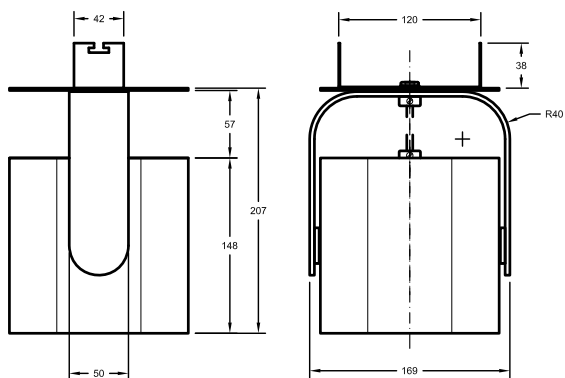


BOX Bucket
Serie / series / série: **Semi-Empotrado**



Ref. **18132-XXXX**

- 0

- 1

- 2

* Colores:	Blanco	Negro	Gris
* Colours:	White	Black	Grey
* Couleurs:	Blanc	Noir	Gris

Baño Metal Satinado / Powder coated brushed /
Enduit de poudre brossé

- A Cobre Satinado Mate Brushed Copper Cuivre Brossé	- D Oro Satinado mate Brushed Gold Or Brossé	- G Grafito Satinado Mate Brushed Graphite Graphite brossé
---	---	---

* CRIs | Temp. color/colour/couleur:

- G (*)	- C	- N	- H (*)	- E	- F
827	830	840	927	930	940

(*) Bajo pedido / Under request / Sur demande

* Ángulo / Angle / Angle:	- 1	- 3	- 7
	15°	36°	° 70

* Lámpara / lamp / lampe:

- 2	- 3	- 4
1500LM 12,5 W	2000LM 18W	3000LM 25,5 W

* Dali: - **R**

DESCRIPCIÓN | DESCRIPTION | DESCRIPTION

- Luminaria LED suspendida en aluminio, incluye rótula giratoria que facilita la basculación

- Hanging aluminum LED Luminaire, includes a ball and-socket joint for orientation function

- Luminaire suspendu fabriqué en aluminium

INSTALACIÓN | INSTALLATION | INSTALLATION

- Instalación sencilla de platina con tornillos a techo (tornillos no suministrados)

- Easy installation to ceiling with a plaque with screws (screws not supplied) .

- Facile installation au plafond avec une plaque à vis. (Vis non fournis)

CARACTERÍSTICAS TÉCNICAS | TECHNICAL FEATURES | CARACTÉRISTIQUES TECHNIQUES

IP 20 90° 355° LED DRIVER UGR<19 230V 50.000h - L80B20 151x151x187mm

CERTIFICADOS DE CALIDAD | QUALITY CERTIFICATE | CERTIFICAT DE QUALITÉ



FECHA DE ACTUALIZACIÓN / UPDATED ON:
DATE D'ACTUALISATION:

01-03-2016

Tel: +34 937 154 712
Fax: +34 937 154 713
www.nexia.es
www.facebook.com/nexialighting
www.twitter.com/nexialighting